



DATASHEET

12-SCOOTER PARKING RACK

RAS MONO 12



CKSPRACKS RACKS

TECHNICAL SPECIFICATIONS

RAS MONO 12

This parking rack is easy to use and compatible with e-scooters of all types. Its structure is light and robust. The e-scooter is to be parked in its designated area. A security locking system is also available.

MATERIALS USED

Anticorodal aluminium structure. Various stainless-steel bolts.

STANDARD (MATTE) COLOURS

Ral 5024 (Air force blue)  Ral 7030 (Urban)  Ral 6021 (Olive)  Ral 6018 (Green)  Ral 7016 (Polished) 

HOW TO INSTALL IT

The rack has 8 holes Ø11 that allow it to be fixed to the ground, using the fixing caps it comes with. Anti-theft caps are available on request. For safety reasons, we recommend that the rack be secured before use.

MAINTENANCE

Despite its exposure to atmospheric conditions, the rack does not require any extraordinary maintenance work, due to the fact that it is made of aluminium and steel components. We recommend covering it in the event that it is not used in winter.

WARRANTY

There is a 2-year warranty on all of the rack's structural parts. Spare parts are available for all components. Ask for prices and availability. The warranty does not cover damage caused by misuse or vandalism. THE WARRANTY IS EX-WORKS "GREEN GARAGE BIKE".

OVERALL SIZE AND WEIGHT

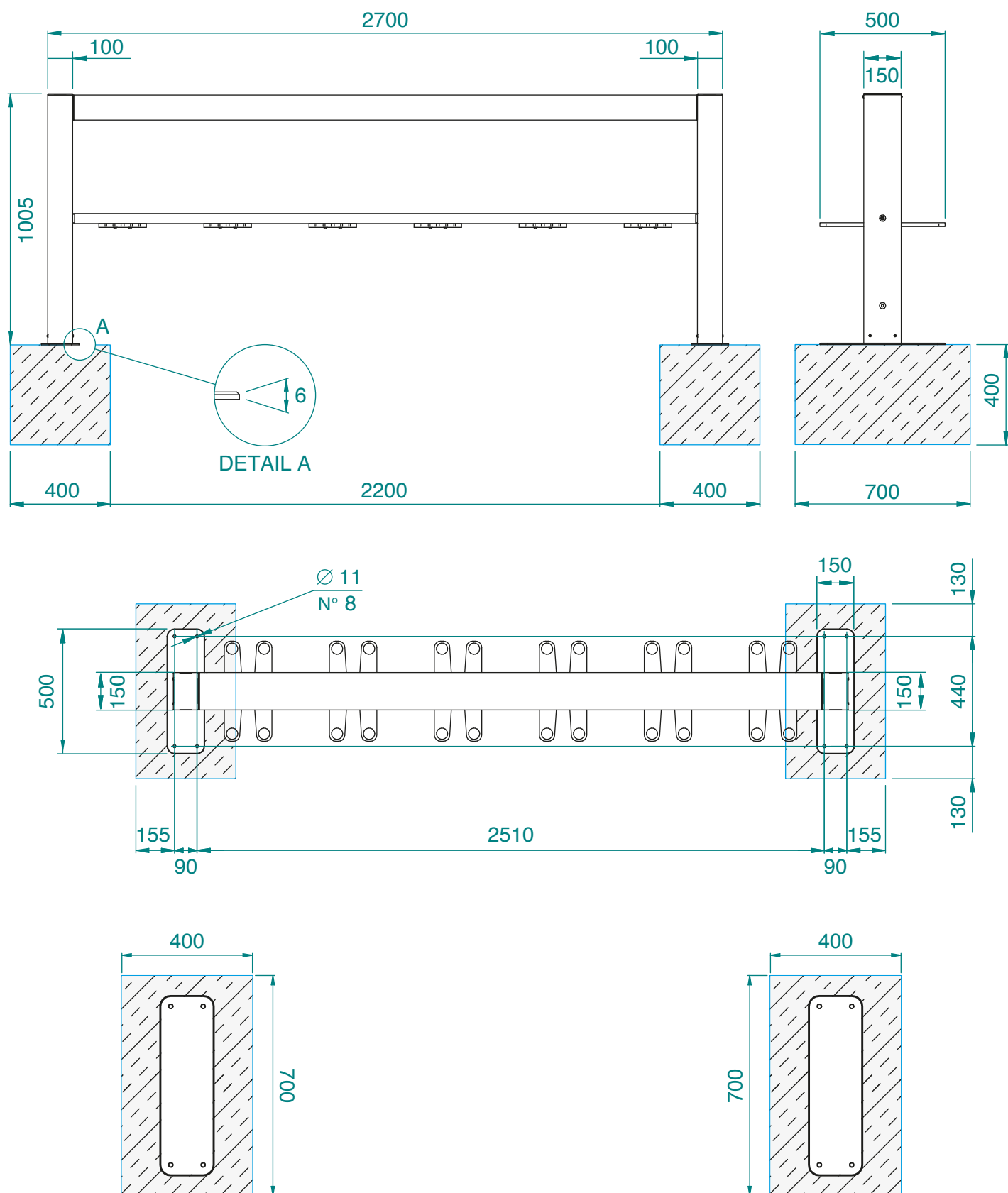
Height 100.5 cm - Width 270 cm - Depth 50 cm - Weight 45 kg.

CUSTOM GRAPHICS

GREEN GARAGE BIKE offers the possibility of customising the rack with the customer's graphics. Send us a vector file and we will provide you with a quotation for the customisation work.

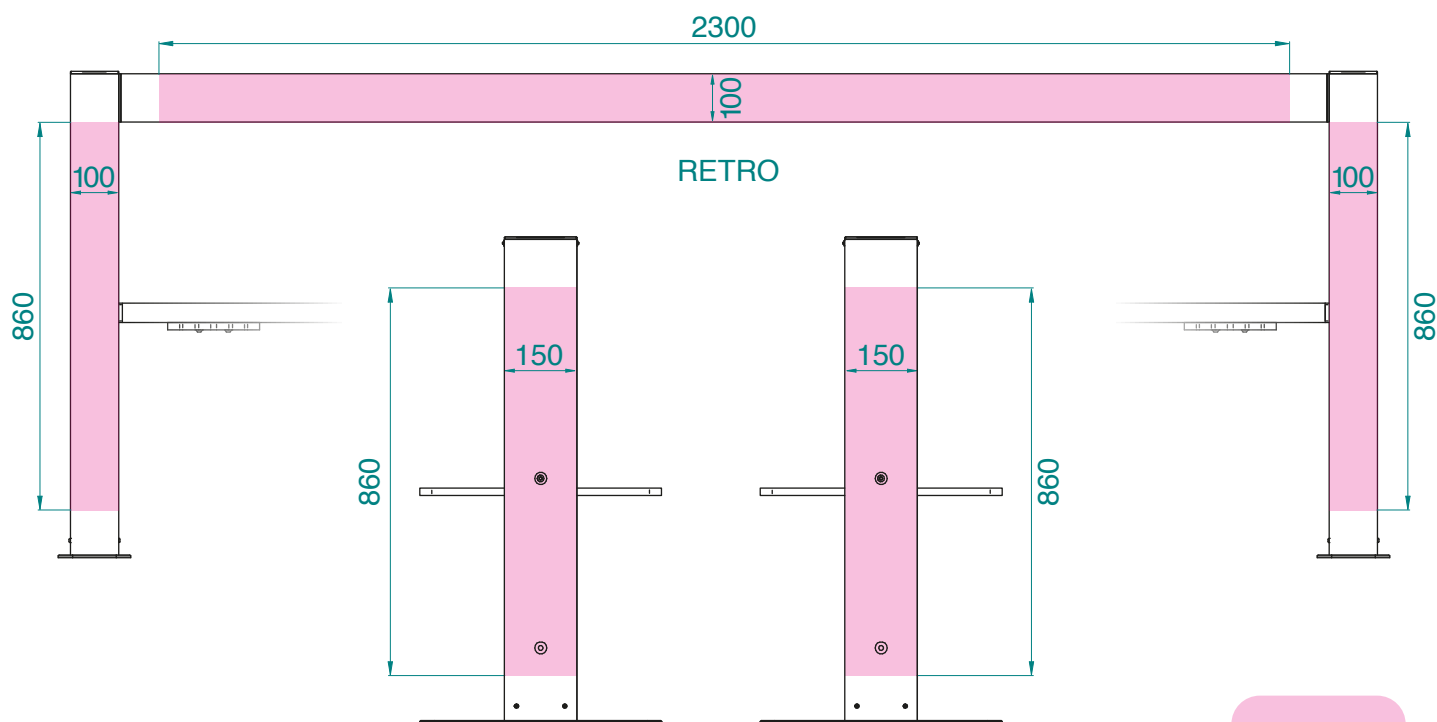
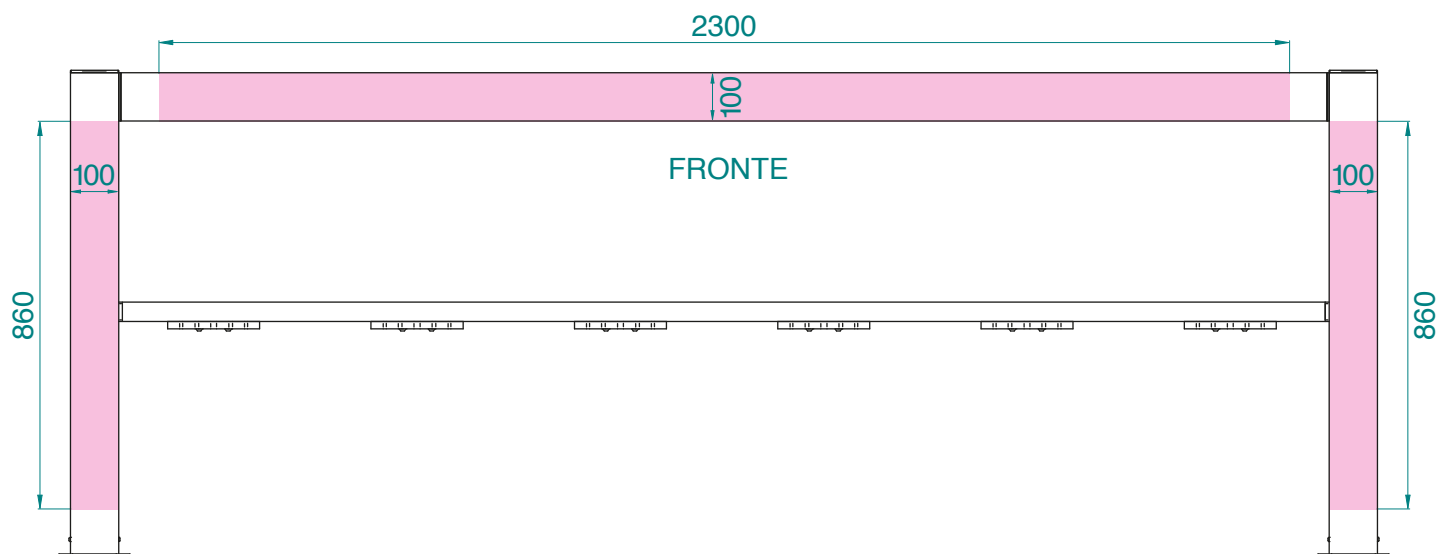
SIZE

RAS MONO 12



CUSTOM GRAPHICS SIZE

RAS MONO 12



GRAPHICS SIZE

