



• DATASHEET

## BASIC RACK 1.5 METERS

# RAS 1.5



# CKSPRACKS

# RAS 1.5






## TECHNICAL SPECIFICATIONS

This parking rack is easy to use and compatible with bikes of all types. Its structure is light and robust. The bike is to be lifted and the saddle placed on the support beam that is covered with a plastic element.

### MATERIALS USED

Powder-coated iron pipe rack. Various stainless-steel bolts.

### STANDARD (MATTE) COLOURS

Ral 5024 (Air force blue)  Ral 7030 (Urban)  Ral 6021 (Olive)  Ral 6018 (Green)  Ral 7016 (Polished) 

### HOW TO INSTALL IT

The rack has 8 holes Ø11 that allow it to be fixed to the ground, using the fixing caps that have been provided. Anti-theft caps are available on request. For safety reasons, we recommend that the rack be secured before use.

### MAINTENANCE

Despite its exposure to atmospheric conditions, the rack does not require any extraordinary maintenance work. We recommend covering it in the event that it is not used in winter.

### WARRANTY

There is a 2-year warranty on all of the station's structural parts (including the pump), with the exception of parts prone to wear and tear (i.e. gaskets, rings etc.). Spare parts are available for all station components. Ask for prices and availability. The warranty does not cover any damage caused by individuals or vandalism. THE WARRANTY IS EX-WORKS GREEN GARAGE BIKE.

### OVERALL SIZE AND WEIGHT

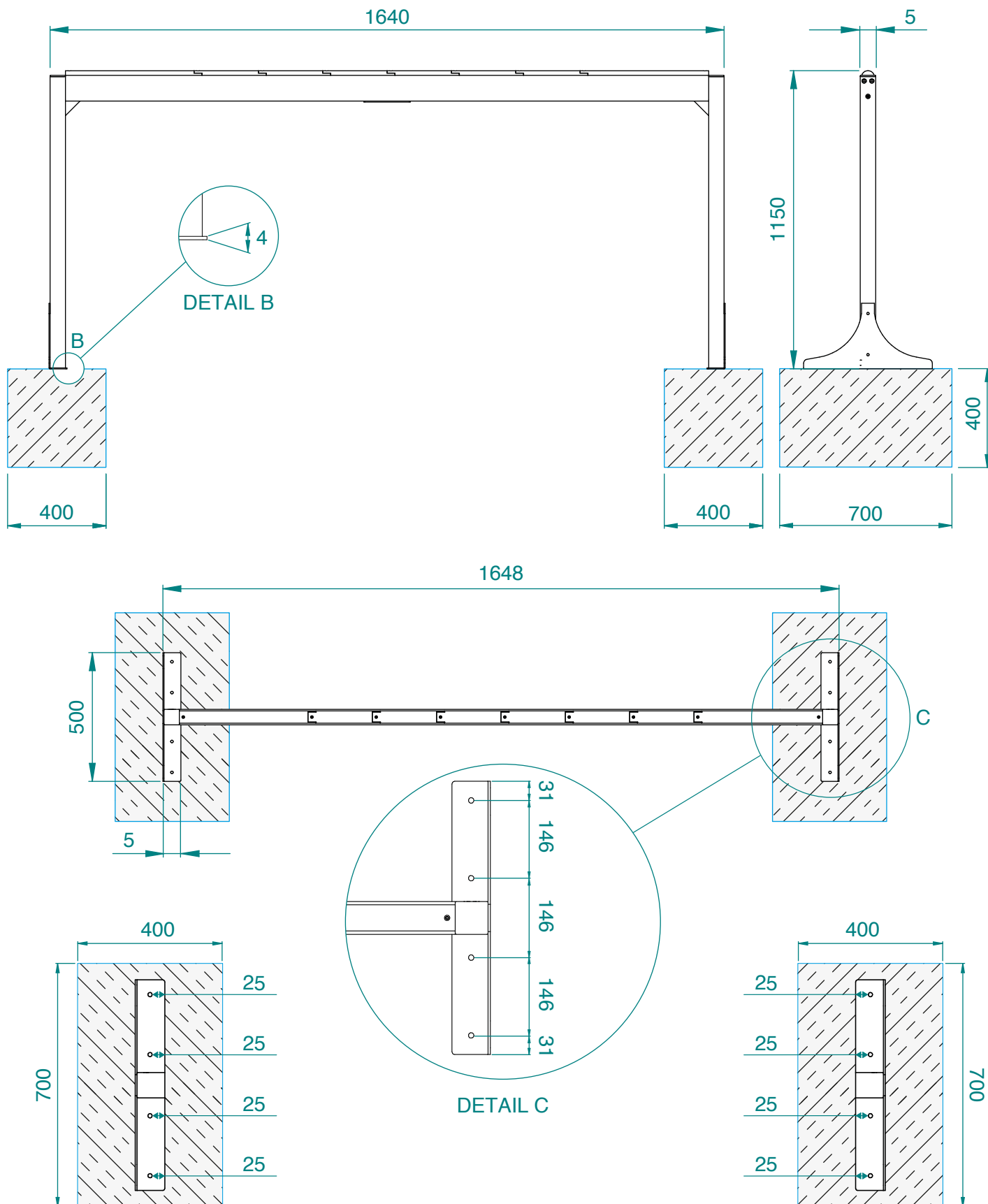
Height 115 cm - Width 164 cm - Depth 50 cm - Weight 21 kg

### CUSTOMISED GRAPHICS

GREEN GARAGE BIKE offers the possibility of customising the station with the customer's graphics. Send us a vector file and we will provide you with a quotation for the customisation work.

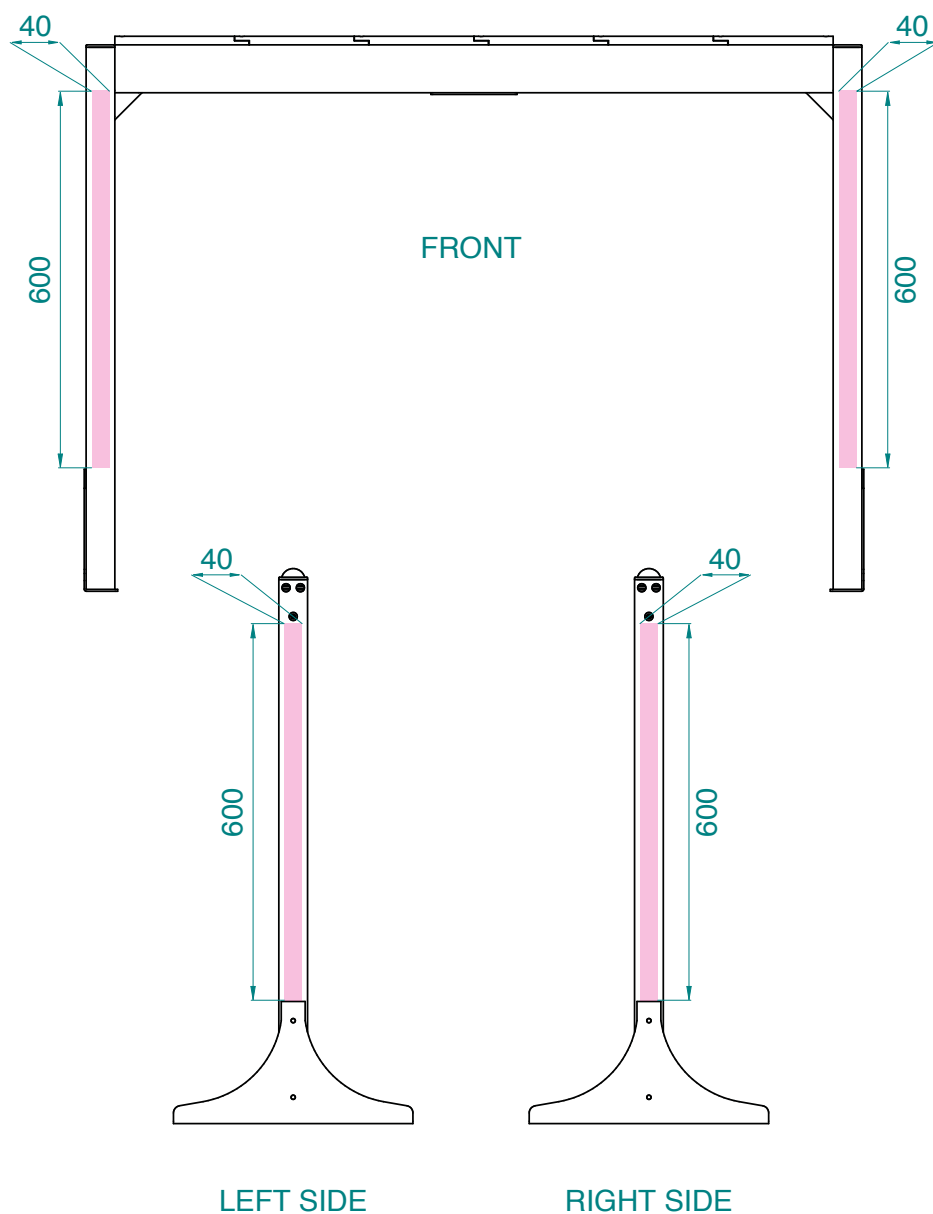
SIZE

**RAS 1.5**



## CUSTOM GRAPHICS SIZE

# RAS 1.5



GRAPHICS SIZE

